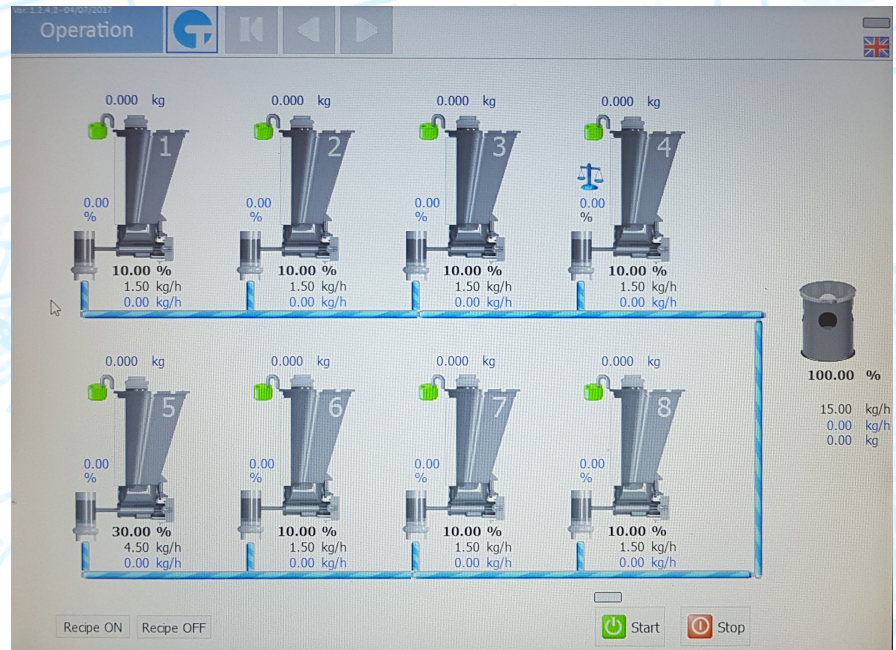


GRAVIMETRIC DOSING CONTROL S2 SYSTEM



DESCRIPTION

The CT Systems dosing control system S2 is a computerized closed-loop control for the GB+ gravimetric dosing and blending unit. A maximum of 12 dosing units can be controlled in up to 4 lines. Data entry can be made during production by means of a 15" TFT-LED touch screen on a graphical user interface. Operation is menu-driven and can be password protected. The control offers graphical and numerical display of the operation parameters of the entire installation. In the event journal, all changes in the settings and all alarm messages are time stamped.

- CT Systems dosing control systems are completely maintenance-free and designed for 7 day, 24-hour operation.
- CT Systems dosing control systems meet the European **CE** requirements.

BASIC VERSION

- 15" TFT-LED Touch Screen Display (max. 12 dosing units can be visualized)
- Optional: 18" TFT-LED Touch Screen Display (max. 12 dosing units can be visualized)
- Data save on SSD (solid state disk)
- Real-time clock
- A maximum of 12 dosing stations and max. 4 lines can be controlled
- Type of protection of 15" TFT-LED Touch Screen Display: IP 54
- Permissible operating temperature of 15" TFT-LED Touch Screen Display: 0°C to +50°C Relative humidity: 90 %, non-condensing
- Permissible storage temperature of 15" TFT-LED Touch Screen Display: -25°C to +70°C
- Allowed operating temperature of S2 dosing control: 0°C to +40°C Relative humidity: 90 %, non-condensing
- Permissible storage temperature of S2 dosing control: -25 to +70°C
- Operating voltage: 24 VDC +/- 10 % (55 W)

INTERFACES:

- Galvanically separated input and outputs for all dosing stations
- Ethernet 100 Mbit/s
- Mouse / Keyboard
- On line diagnostic
- 4 x RS 422/485 weight channel
- USB
- DVI
- RS 232 Touch

TECHNICAL DATAS

- Menu driven
- Messages and entries in plain text and/or graphic
- Data and time
- Entries are checked for wrong data (messages)
- Recipe memory for more than 100 recipes Storage of dosing factors and/or refill limits recipe entry n % or units (e.g. lbs/h)
- Adjustable password levels
- Online system configuration for 1 to 12 dosing stations
- Online multi-language display
- Online switching of units (kg/h, lb/hr, grams/hr)
- Line stop by alarm shut-down of individual dosing station feeder empty, motor fault, actual value fault
- Alarm protocol: all alarms are monitored by number, time and acknowledgement, no limit messages per day, max. 3 days
- Event protocol: all changes of entries are monitored by time. No limit messages per day.
- Auto calibration of dosing stations via touch screen
- Preselection of calibration drive command
- Feeder totalisator / line totalisator
- Desired/actual value display
- Gravimetric/volumetric mode adjustable
- Local or line mode of dosing adjustable
- Adjustable alarm limits
- Drive command high/low
- Percent value feeding quantity low/high
- Online service/diagnostic-port RS 232 PC interface for recording and analyzing of process data



PROCESS INPUTS AND OUTPUT GALVANICALLY SEPARATED

- Potential-free alarm output in the central control
- Digital input for each feeder:
 - Enable
 - Start feeder
 - Stop feeder
 - Alarm shut down
- Digital output for each feeder: refill, alarm, operation report
- Graphic display of all inputs/outputs
- Trend display desired/actual for dosing units
- Two additional freely configurable frequency outputs 0 – 10000 Hz (e.g. for line actual output, extruder control, etc.)
- Two freely configurable frequency inputs 0 – 10000 Hz

APPLICATIONS

Gravimetric loss-in-weight continuous

OPTIONS

HOST PROTOCOLS (OPTIONAL):

- Modbus/TCP
- ProTbus DP
- ProTnet
- Ethernet/IP



Headquarters and factory

Via Postumia, snc - 15057 Tortona (AL)
Tel.: +39 0131 866105 - Fax: +39 0131 863581
E-mail: info@ctsystems.it